

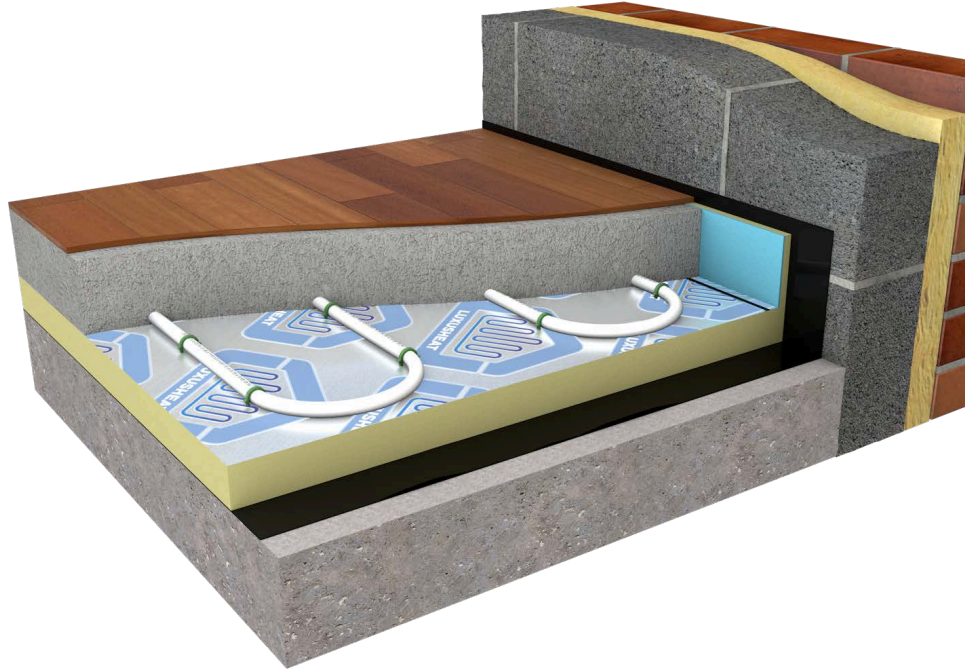


Floor Construction - FC1 A&B

Pipe Clips - Screed

KEY BENEFITS >>>

- > Can be used with a staple gun for quick installation
- > Can be fixed directly to insulation
- > Less expensive installation due to less fixing materials
- > Good for irregular shaped rooms
- > Best efficiency with Heat Pumps
- > Low water temperatures
- > Suitable for all floor finishes



✓ PROCLIP 60mm
60PROCLIP



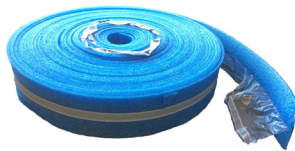
✓ PROCLIP 40mm
40PROCLIP



✓ CONDUIT PIPE 50m
50CONDUIT



✓ EDGE INSULATION 50m
50EDGE



✓ PROSTAPLE GUN
PROSTAPLEGUN



✓ PIPE DECOILER
DECOIL



< OVERVIEW

Solid floor constructions are one of the simplest, most cost effective ways of installing UFH. The pipes are laid on insulation then covered with screed which acts as a large heat conductor. There are two types of screed that can be used over the pipes; traditional sand/cement or specialist Anhydrite flow screed.

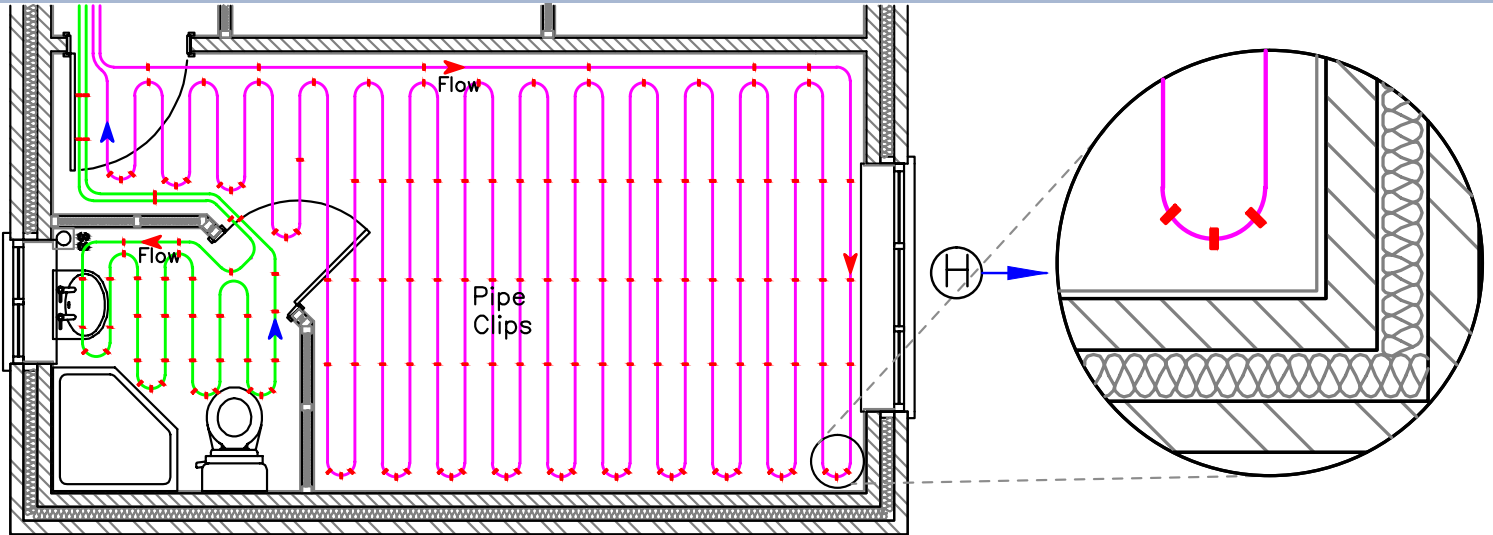
Where the pipe is laid on insulation with sand/cement the optimum screed depth is 65mm for domestic and 75mm for commercial applications. The same situation with an Anhydrite screed will only call for a nominal screed thickness of 50-55mm.

- Best suited for Firmopress multilayer pipe 16x2mm
- Maximum outputs: -100w/m² - Stone/tile/carpet
70w/m² - Timber floor finishes
- Flow temperatures 40 - 50°C
- BS EN1264 UFH design on request.



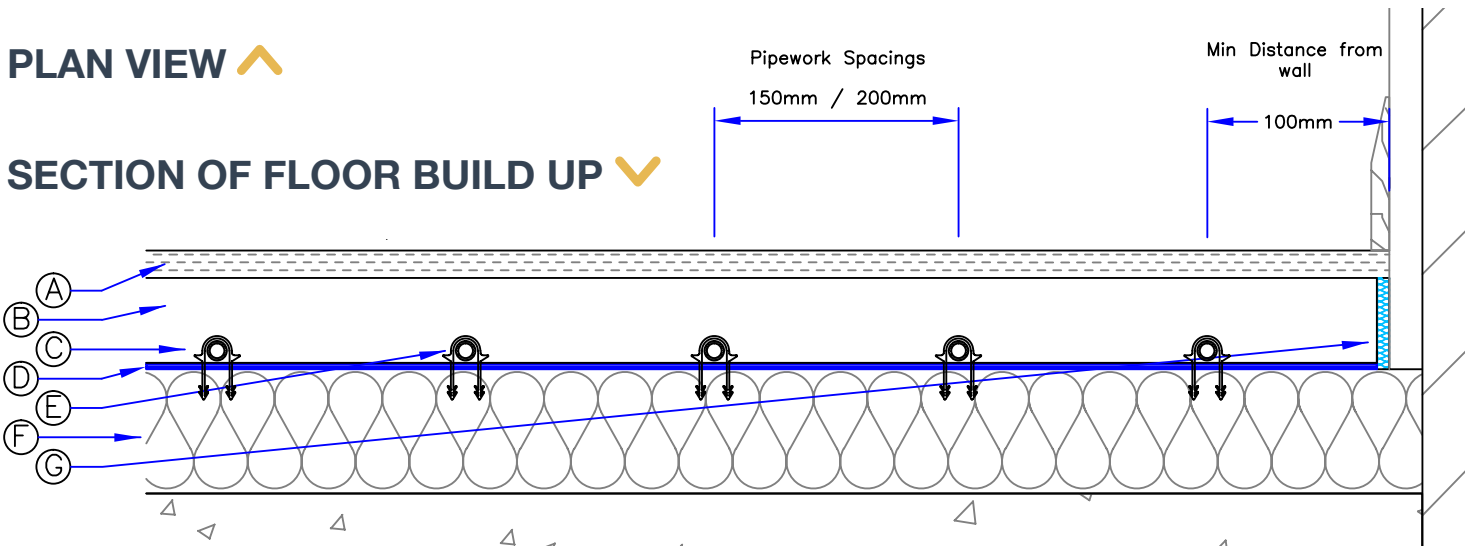
Floor Construction - FC1 A&B

Pipe Clips - Screed



PLAN VIEW

SECTION OF FLOOR BUILD UP



- A** > **Floor Finish.**
- B** > **Screed** - Traditional Sand/Cement 4:1 65-75mm depth.
Liquid Screed 55-65mm depth.
- C** > **Pipe Clips** - Secured using a pipe clip staple gun at every 500mm.
- D** > **Protective Vapour Layer** - It is essential to prevent the screed from slipping between the insulation board joints. This can be achieved by taping the joints of the insulation or alternatively using a polythene membrane (in addition to builders DPM).
- E** > **UFH Pipe** - Pert-Al-Pert or FlexiPex 16mm Heating Pipework laid at 200mm / 150mm c/c's as specified in quotation and laid approximately 100mm away from walls.
- F** > **Insulation** to comply with Part L of the Building Regulations.
- G** > **8mm Edge Insulation** with self adhesive backing must be positioned around all wall edges to reduce heat loss and take up screed expansion.
- H** > **Pipe Clip** for securing pipe on the bends and in localised areas so pipework is securely fixed to the insulation.



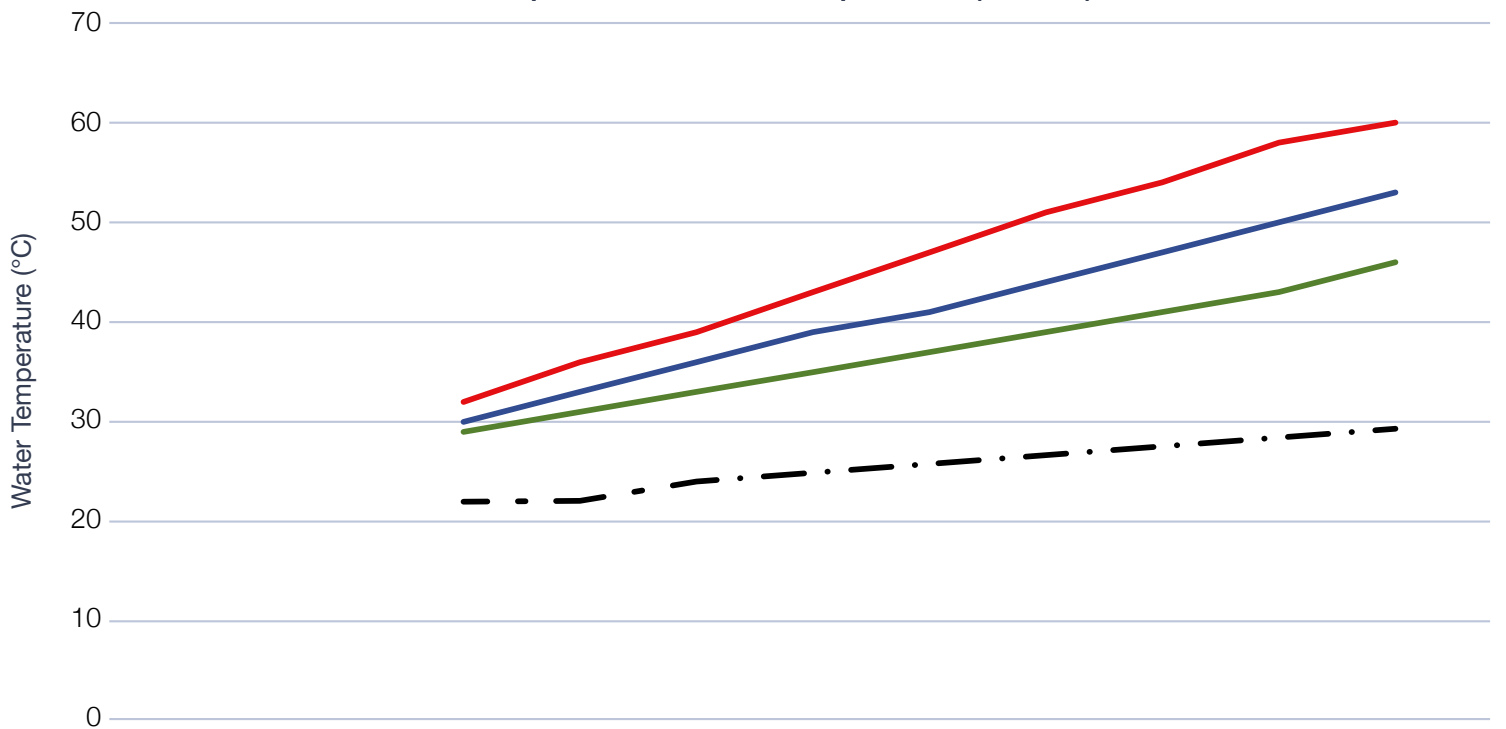
Floor Construction - FC1 A&B

Pipe Clips - Screed

OUTPUTS/WATER TEMPERATURES & FLOOR COVERINGS >

The available output of the system will vary depending on the overall resistance of the floor finish. Based on a Design room temperature of 20°C & 7.5K ΔT. The table below is for guidance only and actual outputs and temperatures may vary.

Heat output / Flow water Temperature (Screed)



Output w/m²

	20	30	40	50	60	70	80	90	100	Water Temp (°C)
— Tile / Stone	29	31	33	35	37	39	41	43	46	
— Laminate / Vinyl	30	33	36	39	41	44	47	50	53	
— Carpet	32	36	39	43	47	51	54	58	60	
- - - Floor Temp	22	22	24	25	26	27	27	28	29	